

Crystic[®] Stonecast

Quality solid-surface products can be made with Dura Stone fillers that meet today's high standards. Combining the look of stone with the strength of a man-made material, Dura Stone is the solution for sophisticated people who want it all.

Dura Stone's solid, nonporous composition is highly resistant to chipping and cracking, making it perfect for tough, everyday use. Our products are not laminated or coated, so they won't peel or develop surface cracks or blemishes. And Dura Stone is easy to maintain with ordinary kitchen sponges and cleaners for non-polished surfaces.

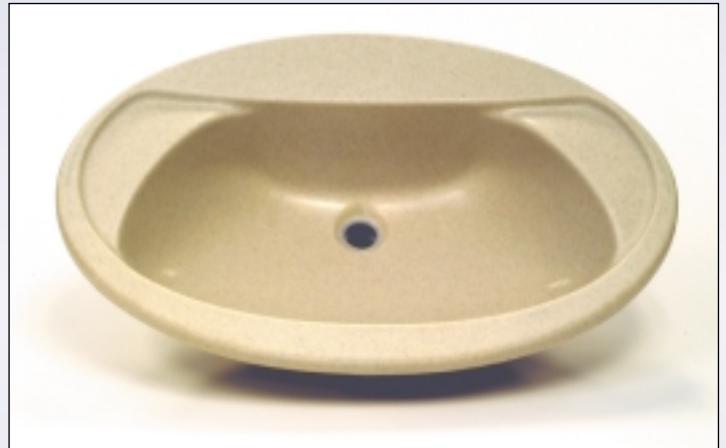
Dura Stone is perfect for virtually any indoor surface including counter tops, bars, vanities and tables, as well as more rugged applications such as laboratory and work surfaces. Dura Stone products can also be used for wall panelling, tub and shower surrounds, restroom partitions and counter faces.

Applications for Crystic[®] Stonecast

- Kitchen surfaces and sinks
- Sanitary ware including vanity units, baths, shower trays, toilet bowls for both domestic and commercial premises
- Countertops for offices, shops, banks, airports, bars and restaurants.

Features of Stonecast

- Complicated shapes easily produced
- Aesthetically pleasing
- Easily repaired
- Fire Resistant
- Heat Resistant
- Proven Durability



Fully cured Solid Surface based on Crystic[®] 935PA meets the following criteria:

- Tested by FIRA to BS EN438. 1991 (full certificate available on request)
- Class I rating to BS476 Part 7 1987
- Class O rating to BS476 Part 6 1989
- M2 F0 rating to the Epiradiateur NFF - 16-101 Test

**BRITISH
MICA**

British Mica Co. Holdings Limited
123 Barkers Lane, Bedford MK41 9RR, England
Telephone: +44(0)1234 327977
Facsimile: +44(0)1234 352016
e-mail: info@britishmica.co.uk
website: <http://www.britishmica.co.uk>



Cert No. 6419

Some examples of the vast colour range available in Crystic® Stonecast



**Garnet
PSS326**



**Sunset
PS130**



**Raspberry
PS260**



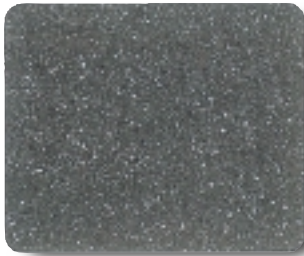
**Tarragon
PSC417**



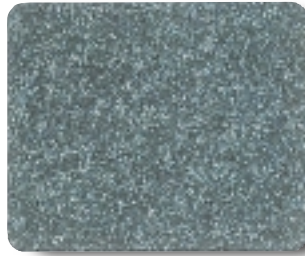
**Pyrenees
PSC407**



**Quartz
PS110**



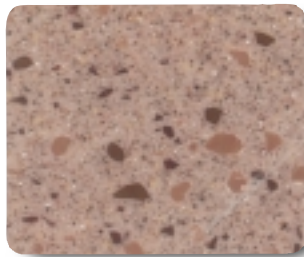
**Emerald
PS120**



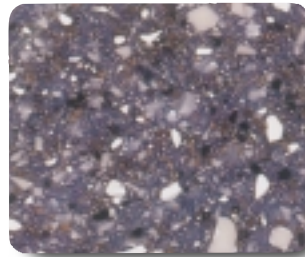
**Malachite
PSC409**



**Pine
PS090**



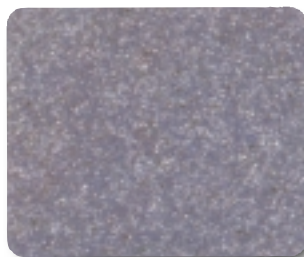
**Cherry Wood
DGLC900**



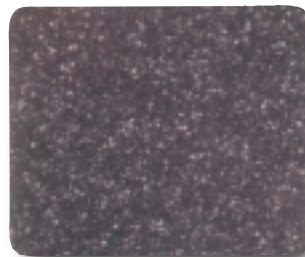
**Clear Creek*
DGLC865**



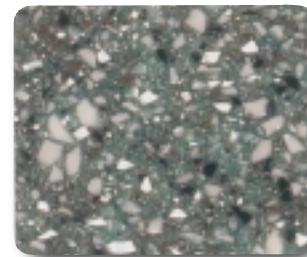
**Corona*
DGLC920**



**Sierra Sky
DG340**



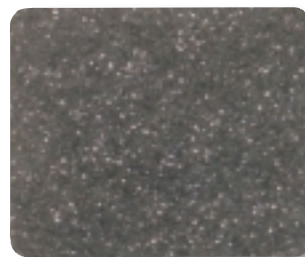
**Midnight
DG010**



**Spring Rain
DLGC870**



**Sheer Linen
DG607**



**Hunter Green
DG360**



**Sterling
DG020**

* Premium Colours. Colours may vary.